

# JK9813 series

Intelligent button machine

# JOCKY



Table top type



Vertical type

JK9813 S ————— 509[AB / CD / R / E] 508 [J / Z]

Motor stamping  
(punch and attach two-in-one)

Automatic gasket filling

Snap button

Snap button cover

Snap button bottom

Bump button

Jeans button

Egelet button

Rivet decorative button

## Features

1. Using universal button mould , low replacing cost.
2. Motor stamping, Punch and button two-in-one coherent work.
3. The height and width of track can be adjustable according to button shape.
4. Suits for various sizes and shapes of button, no need to change track.
5. High efficiency , low noise and strong stability.

# MORE INFORMATION

## Technical Specification

Model	JK9813
Voltage	220V 50HZ
Power	950W
Pressure	0.4-0.5Mpa
Driving mode	Motor stamping
Packing size	1040x700x1400mm
Weight(G.W/N.W)	170/140kgs

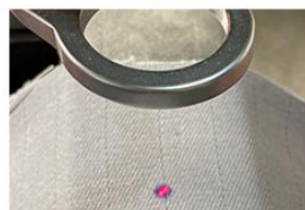
Table top type:



Stepper motor driven swing arm



Punching and attaching consistently



Infrared precision positioning



Automatic gasket filling(Option)

Vertical type:



Universal mould



Stepper motor driven swing arm



Punching and attaching consistently



Automatic gasket filling(Option)