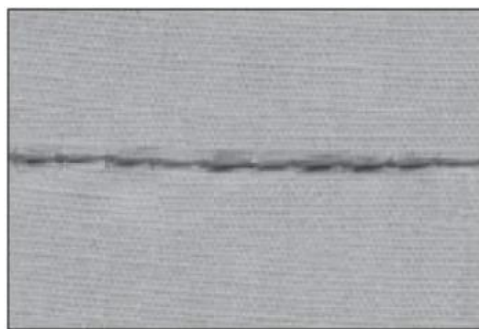
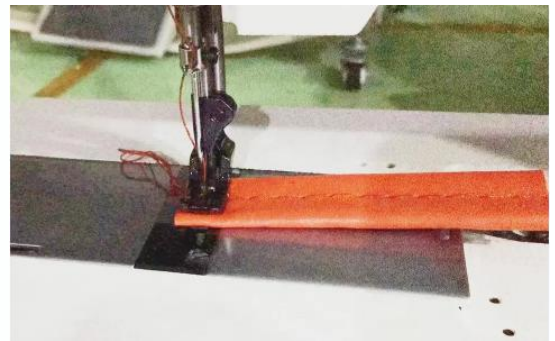


JK20606-1

JOCKY

Single needle compound feed lockstitch sewing machine



JK20606-1

Features

1. Features a straight needle, vertical axis swivel hook with self-lubricating features for catching loops and slide bar take-up to create double-lock threads.
2. The needle bar can be engaged and disengaged mechanically, the arm shaft and the hook shaft are supported by ball bearings.
3. Large capacity hook.
4. Reverse stitching.

MORE INFORMATION

Technical Specification

Model	JK20606-1
Max speed	2000 rpm
Needle type	3.5-6mm
Needle no	DPX17(19-23 #)
Thread number	1
Max needle foot length	400W
Pesser foot lift	8-13mm
Package size	670x350x635mm
Weight(G.W/N.W)	50/40KGS