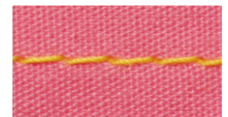


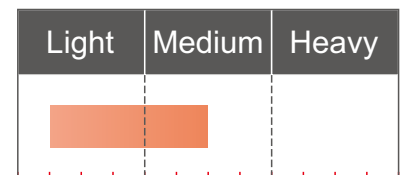
JK200-1S

JOCKY

Computerized single needle lockstitch sewing machine with step motor technology

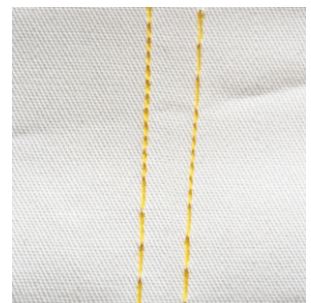
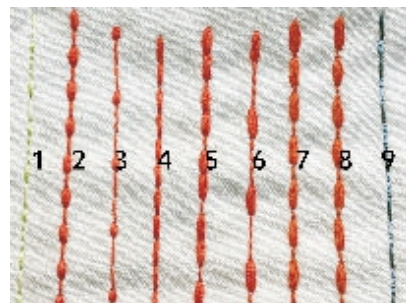
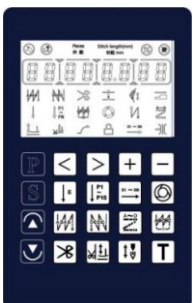


1-needle stitch



Features

- With the latest step motor technology to control the fabric feeding mechanism.
- Precise digital stitch length adjustment by every 0.1mm, easy to use.
- With 9 built-in different patterns of seams.
- Back reverse stitching ultra-quiet and stable.
- Tight seam function - after trimming the length of the thread left on the cloth is within 3MM.
- Buttons for supplement stitches can immediately switch it to 1/2 and 1/4 of the previous stitch length.



MORE INFORMATION

Technical Specification

Model	JK200-1S
Max. speed	5,000sti/min
Lubrication	Automatic
Needle type	DBX1 7-16#
Max. stitch length	5mm as regular
Needle bar stroke	30.7mm
Pesser foot lift	6-12mm
Bobbin thread winder	Built-in the machine head
Power	550W
G/N weight & volume	48/46kgs,630*290*555mm=0.101cbm
Complete set	With stand & table 76kgs, 0.188cbm