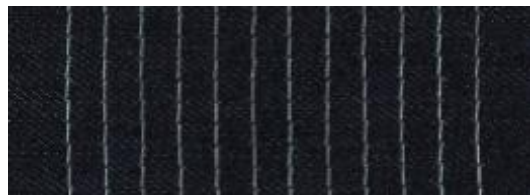
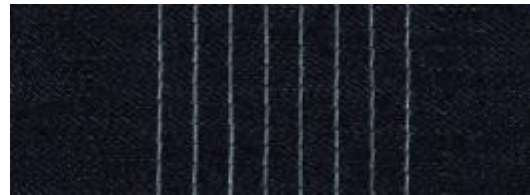
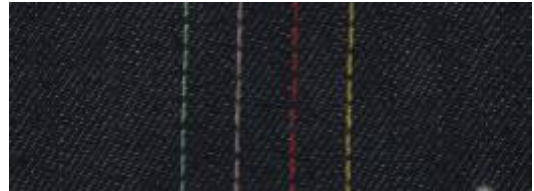
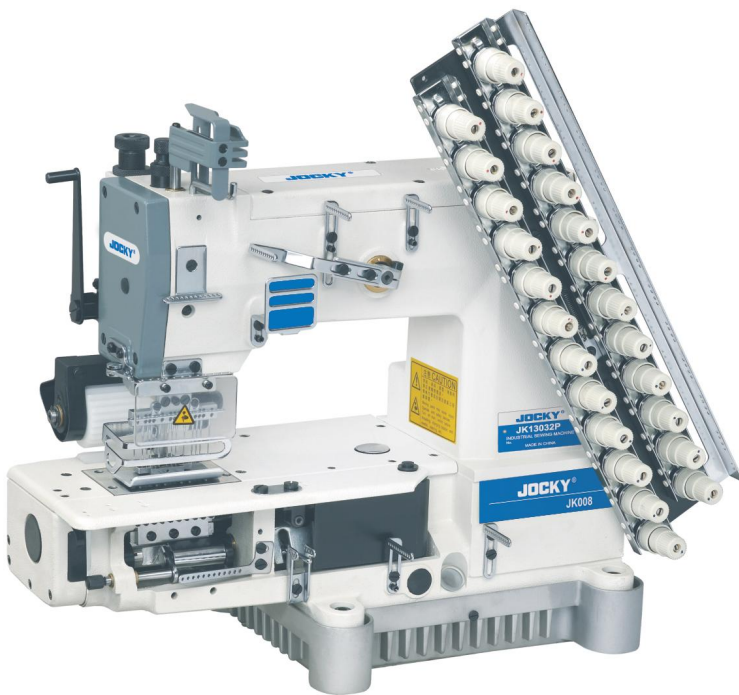


# JK008 series

Multi-needle double chain-stitch circular sewing machine

# JOCKY



## Features

1. The independent hook seat is adopted, which can change different needle position combinations to achieve the function of multi purpose of one machine.
2. Button-type seam distance adjustment mode, easy and fast adjustment, suitable for multi-variety production.
3. Fully automatic oil supply, hook stitch longitudinal movement mechanism, multi-needle double chain stitch. Up to 33 needles can be installed within the range of 153.6mm.
4. The double cooperation of the upper and lower rollers makes the cloth flow more smoothly, suitable for the sewing of thin to thick materials such as work clothes and jeans.
5. The barrel-shaped body design is convenient for sewing ring-shaped clothes.

# MORE INFORMATION



VWL:

Elastic-feeding for waist sewing



VPL:

Tape attaching



VSF:

Shirt fronting attaching



VPT:

Pin tucking



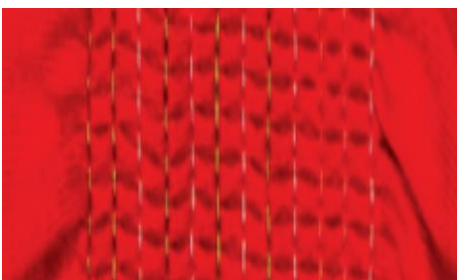
VPQ-T:

Single elastic thread shirring



PQ:

Middle elastic thread shirring



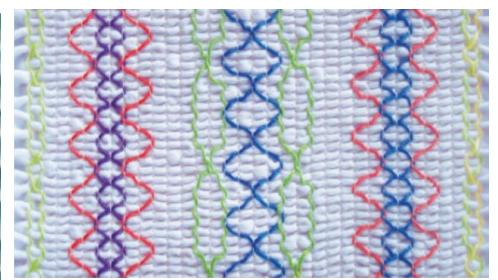
VSQ:

Bottom elastic thread  
Shirring sewing



VPQ/VSM:

Single needle elastic thread  
shirring sewing and smocking



VSQ/VSM

Bottom elastic thread  
shirring sewing and smocking

# MORE INFORMATION

## Technical Specification

Model	Needle quantity	Thread quantity	Needle gauge
JK008-04064P	4	8	1/8"; 1/4"; 3/16"; 5/16"; 1/3"; 3/8"; 3/7"; 1/2"
JK008-06064P	6	12	1/4"
JK008-08064P	8	16	3/16"; 1/4"; 1/3"
JK008-12064P	12	24	1/8"; 3/16"; 7/32"; 1/4"
JK008-13032P	13	24	1/8"
JK008-16048P	16	32	3/16"
JK008-17032P	17	24	1/8"
JK008-23032P	23	24	1/8"
JK008-25064P	25	50	3/16"; 1/4"
JK008-33048P	33	66	3/16"
JK008-08064P/VWL	4	8	1/3"; 1/4"
JK008-08064P/VPL	8	16	1/4"
JK008-0464-254P/VSF	4	8	3/16"-1"-3/16"; 1/4"-3/4"-1/4"; 1/4"-1"-1/4"
JK008-12064P/VPT	12	24	1/8"; 3/16"; 1/4"
JK008-25064P/VPQ-T	25	50	3/16"; 1/4"
JK008-33048P/PQ	33	99	3/16"
JK008-33048P/VSQ	33	66	3/16"
JK008-33048P/VPQ/VSM	33	66	3/16"
JK008-33048P/VSQ/VSM	33	99	3/16"