



# JES-R16

Electric Stacker 1.6T **LI-ION**  
TECHNOLOGY

**ZHEJIANG JOCKY MACHINERY  
TECHNOLOGY CO.,LTD**

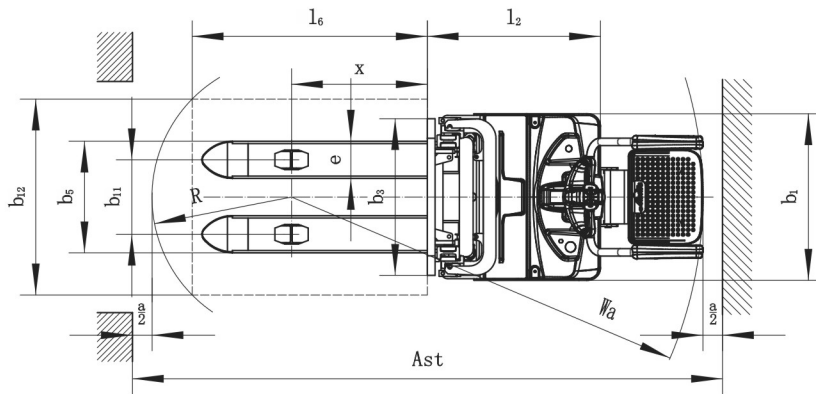
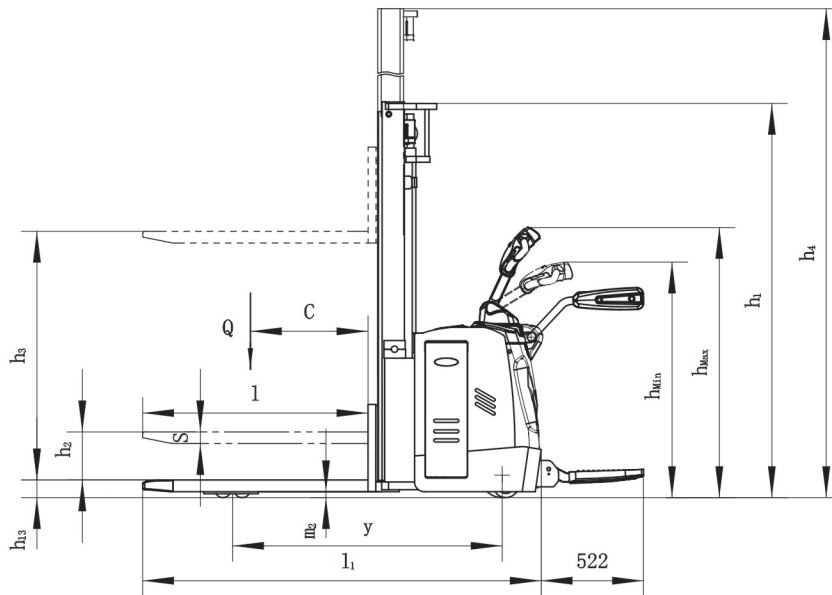


# Electric Stacker 1.6T

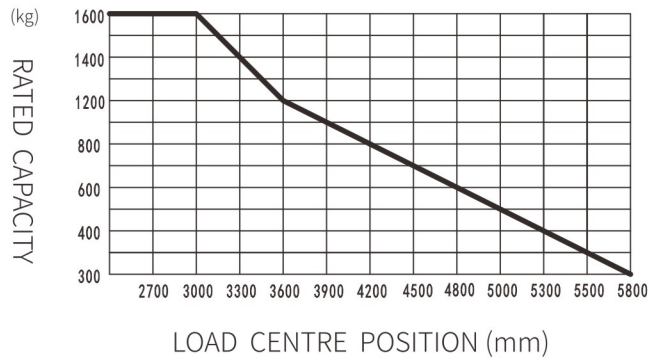
## JES-R16

Distinguishing mark				
1.1	Manufacturer			JUKILIFT
1.2	Model designation			JES-R16 (Li-ion)
1.3	Drive unit			Electric
1.4	Operator type			Standing
1.5	rated capacity	Q	kg	1600
1.6	Load center distance	c	mm	600
1.8	Load distance , centre of drive axle to fork	x	mm	693
1.9	Wheelbase	y	mm	1375
Weight				
2.1	Service weight ( include battery )		kg	1160
2.2	Axle loading, laden driving side/loading side		kg	920/1840
2.3	Axle loading, unladen driving side/loading side		kg	820/340
Types,Chassis				
3.1	Tyre type Driving wheels/Loading wheels			PU/PU
3.2	Tyre size, driving wheels ( diameter×width )		mm	Φ230×75
3.3	Tyre size, loading wheels ( diameter×width )		mm	Φ85×70
3.4	Tyre size, caster wheels ( diameter×width )		mm	Φ130×55
3.5	Wheels, number driving , caster/loading (x=drive wheels)		mm	1x +1/4
3.6	Track width, front,driving side	b10	mm	574
3.7	Track width,rear,loading side	b11	mm	380/410/495
Dimensions				
4.2	Height, mast lowered	h <sub>1</sub>	mm	2020
4.3	Free lift	h <sub>2</sub>	mm	100
4.4	Lift height	h <sub>3</sub>	mm	2912
4.5	Height, mast extended	h <sub>4</sub>	mm	3465
4.9	Height drawbar in driving position min./max.	h <sub>14</sub>	mm	1150/1480
4.15	Lowered height	h <sub>13</sub>	mm	88
4.19	Overall length	l <sub>1</sub>	mm	2030
4.20	Length to face of forks	l <sub>2</sub>	mm	879
4.21	Overall width	b <sub>1</sub>	mm	850
4.22	Fork dimensions	s/ e/ l	mm	60×190×1150
4.24	Fork carriage width	b <sub>3</sub>	mm	800
4.25	Outside width of the forks	b <sub>5</sub>	mm	570/600/685
4.32	Ground clearance, center of wheelbase	m <sub>2</sub>	mm	28
4.34.1	Aisle width for pallets 1000 × 1200 crossways	Ast	mm	2605/2965
4.34.2	Aisle width for pallets 800 × 1200 lengthways	Ast	mm	2575/2935
4.35	Turning radius	Wa	mm	1730/2090
Performance data				
5.1	Travel speed, laden/ unladen		km/ h	5.5/6.0
5.2	Lifting speed, laden/ unladen		m/ s	0.13/0.16
5.3	Lowering speed, laden/ unladen		m/ s	0.30/0.22
5.8	Max. gradeability, laden/unladen		%	8/16
5.10	Service brake type			Electromagnetic
Electric-engine				
6.1	Drive motor rating S2 60 min		kW	1.6
6.2	Lift motor rating at S3 15%		kW	3.0
6.3	The maximum allowed size battery		mm	834×216×630
6.4	Battery voltage/nominal capacity K5		V/AH	24/210 (Li-ion)
6.5	Battery weight		kg	60
Addition data				
8.1	Type of drive unit			AC
10.5	Steering type			Electronic
10.7	Sound pressure level at the driver's ear		dB (A)	74

If there are improvements of technical parameters or configurations, no further notice will be given.  
The diagram shown may contain non-standard configurations.



### RATED CAPACITIES GRAPH



## Option

Lift $h_3+h_{13}$ (mm)	mast types	Lowered mast height $h_1$ (mm)	Free lift $h_2$ (mm)	Extended mast height $h_4$ (mm)
2700	Duplex ZT	1870	100	3165
3000		2020	100	3465
3300		2170	100	3765
3600		2320	100	4065
3900		2470	100	4365
4170		2600	100	4625
4000	Triplex DZ	1822	1390	4460
4500		2022	1590	4960
4800		2122	1690	5260
5000		2187	1740	5460
5300		2287	1840	5760
5500		2352	1910	5910
2700	Duplex ZZ	1819	1320	3135
3000		1969	1470	3435
3300		2119	1620	3735